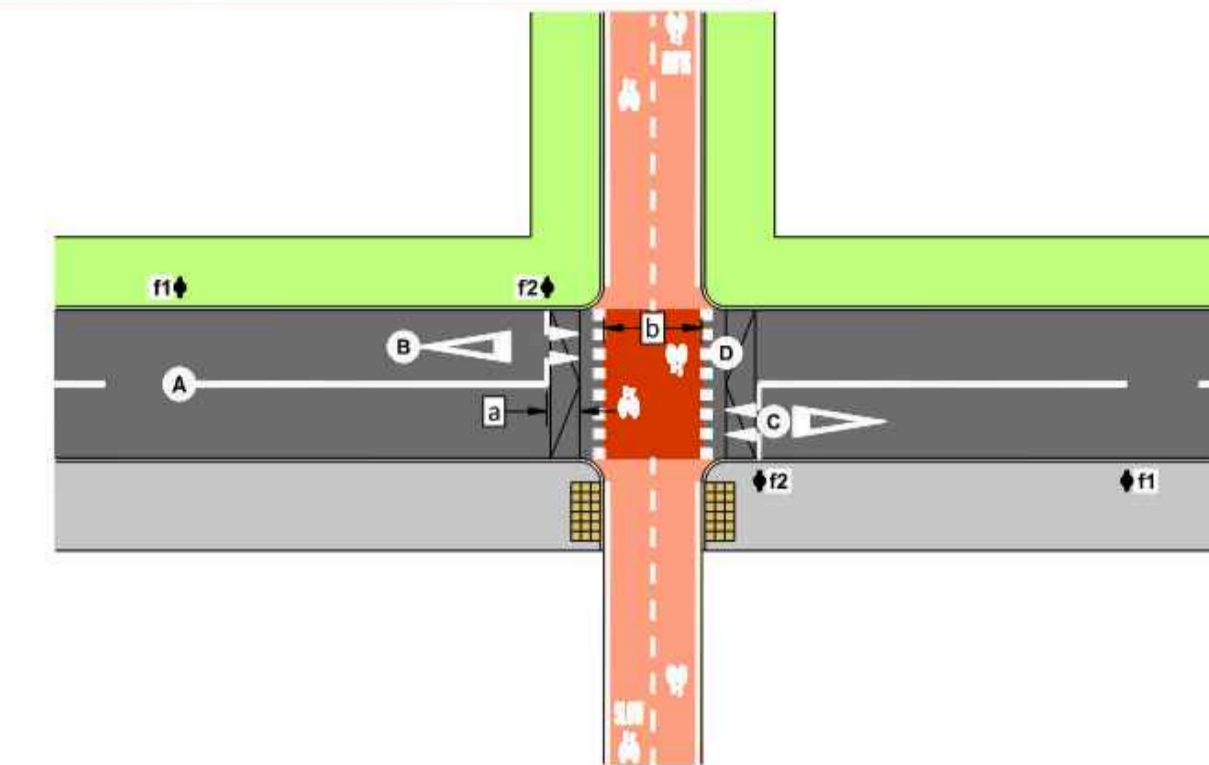


### TL603 Cycle Priority Crossing



- NOTES:**
1. Arrangement where busy cycle route crosses a quiet road/street and cyclists are given priority over motor traffic e.g. where a primary cycle route crosses a quiet access street.
  2. Only suitable for low speed (<50 km/h) and low trafficked (< 2000 PCU/peak hour) carriageways.
  3. Cycle crossing should be raised.
  4. Motorist yield to cyclists at the crossing.
  5. Additional cycle warning signs (W 143) with supplementary plate (P005) to warn motorists of two-way cycle traffic.
  6. Ensure good visibility for all road users.

**KEY DIMENSIONS**

- a 1 - 2m
- b 3 - 4m

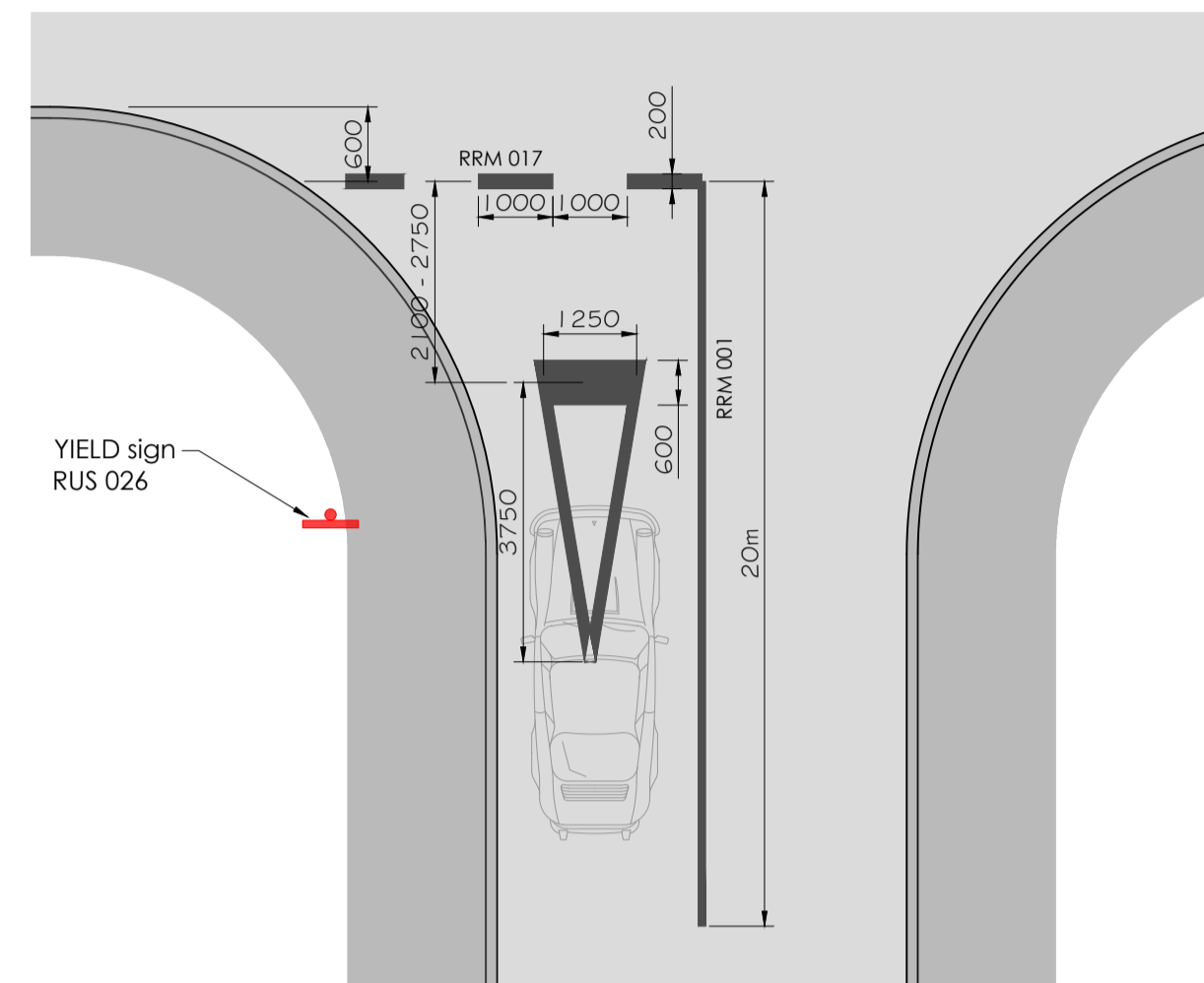
**KEY FEATURES**

- Sign Pole with sign W 143 with P 005 on side f1
- f1 (W 143 with P 005)
- f2 (RUS 026)
- Buff blister tactile

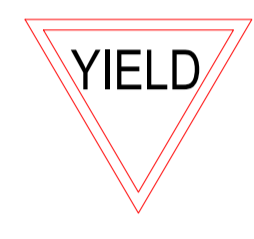
**ROAD MARKINGS (Refer to TSM Chapter 7)**

- RRM 001
- M 115
- RPC 001 with Elephant Feet Marking (D)
- Elephant Feet Markings (400mm wide, 400mm gap, 400mm mark)
- M 112
- M 116
- M 106

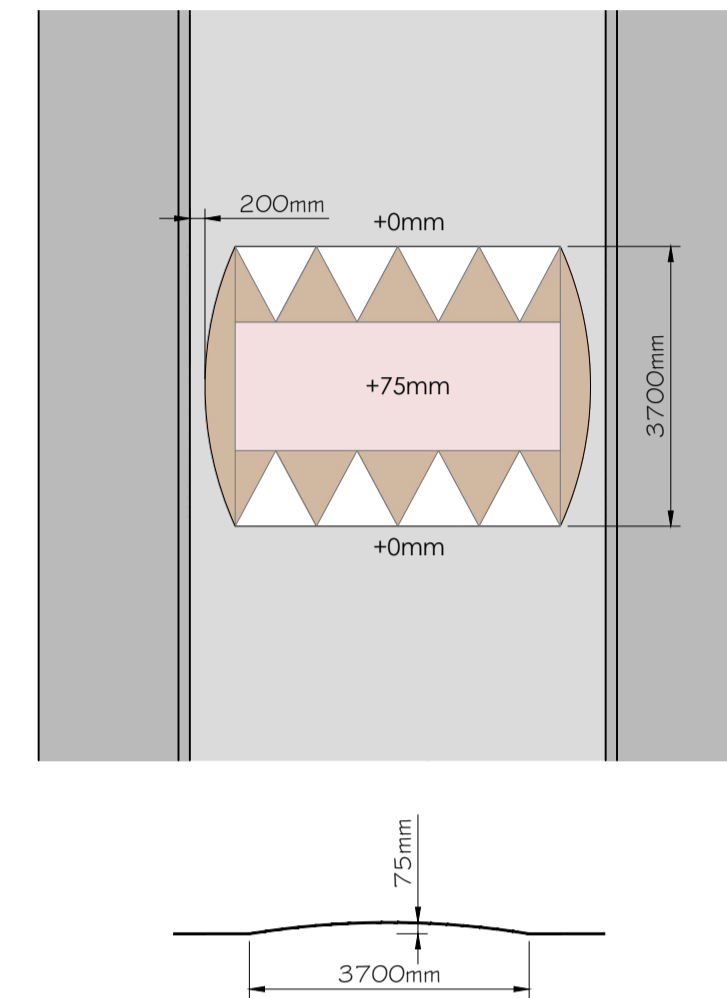
**Typical Detail TL603 - Cycle priority crossing**  
Scale : NTS



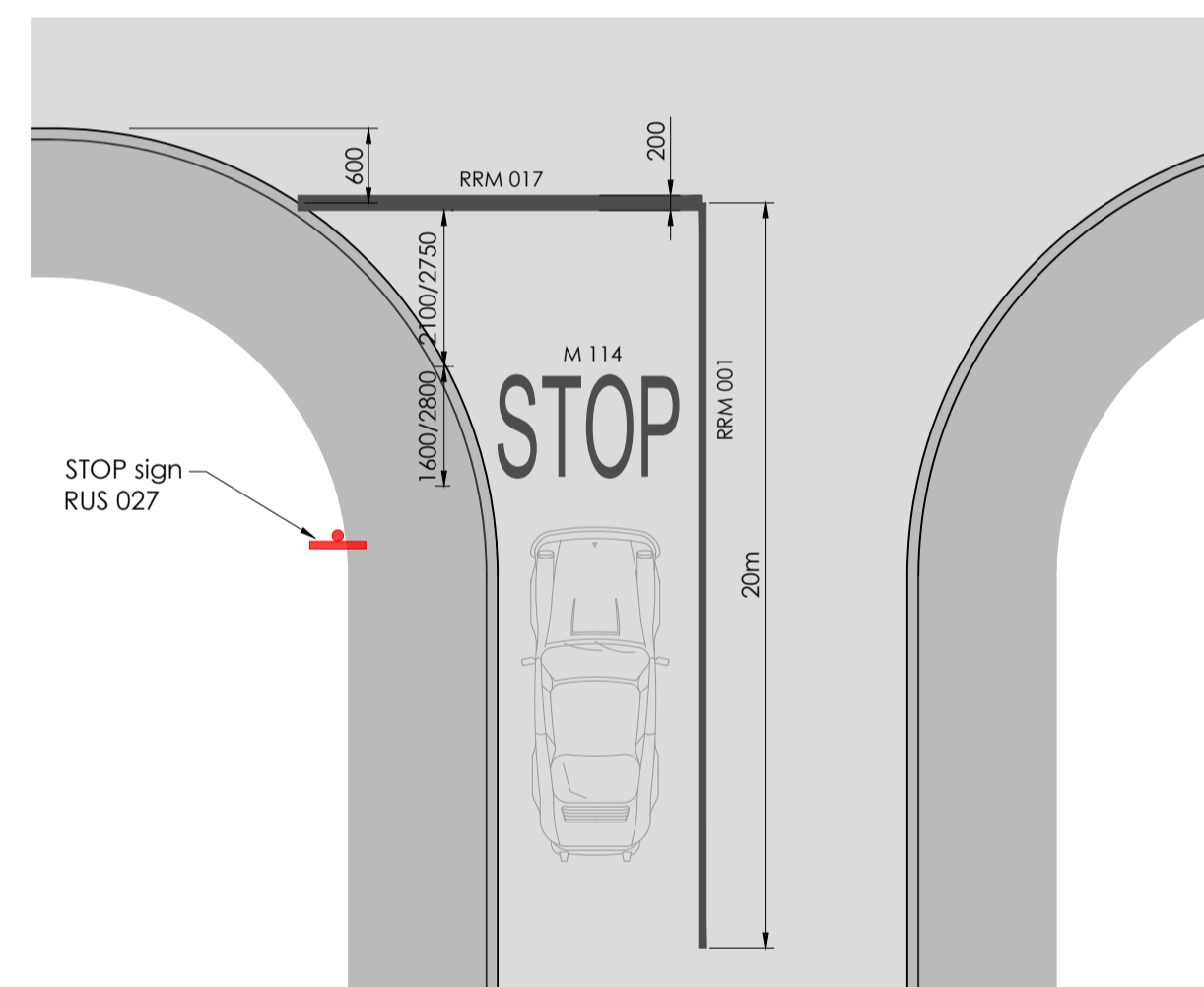
**Typical Yield Road Markings**  
Scale : 1:100



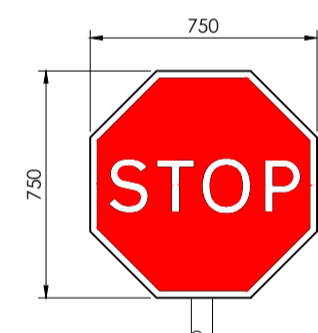
**Yield Sign:**  
750mm YIELD SIGN (RUS 026)  
TO COMPLY WITH TSM 5.3



**Typical Speed Hump Detail**  
Scale : 1:100

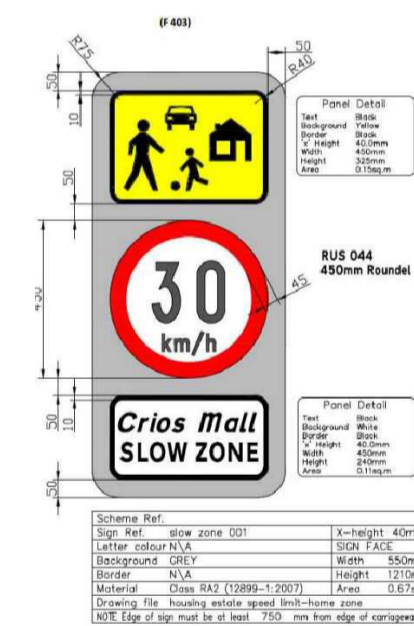


**Typical Stop Road Markings**  
Scale : 1:100

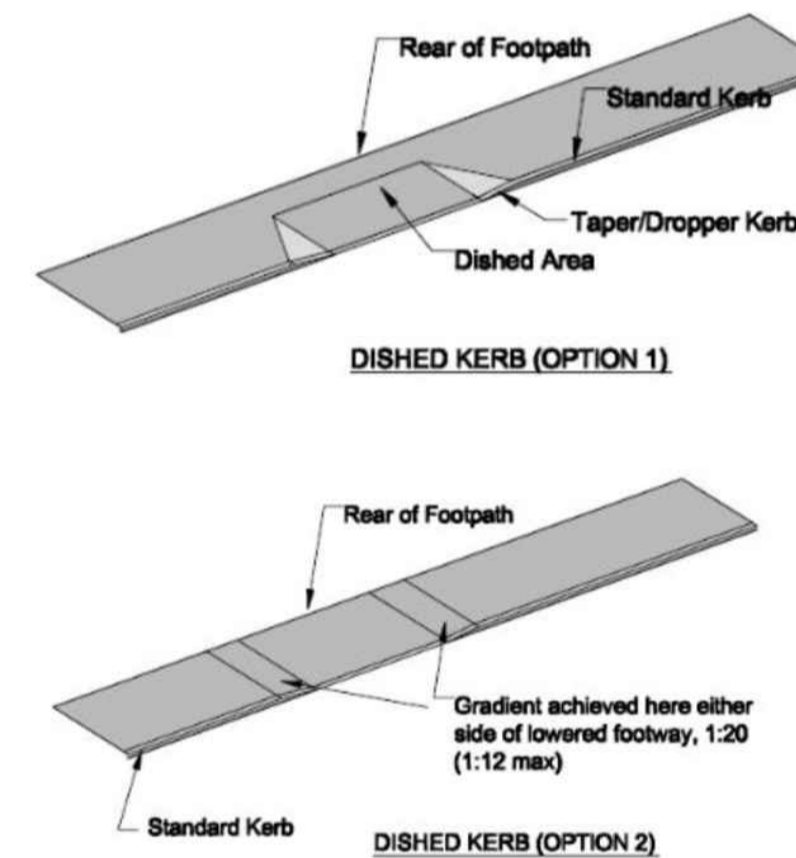


Speed Km/h	Sign Size
< 50	750mm
50-60	750-900mm
60<	900-1200mm

**Stop Sign:**  
750mm STOP SIGN (RUS 027)  
TO COMPLY WITH TSM 5.2

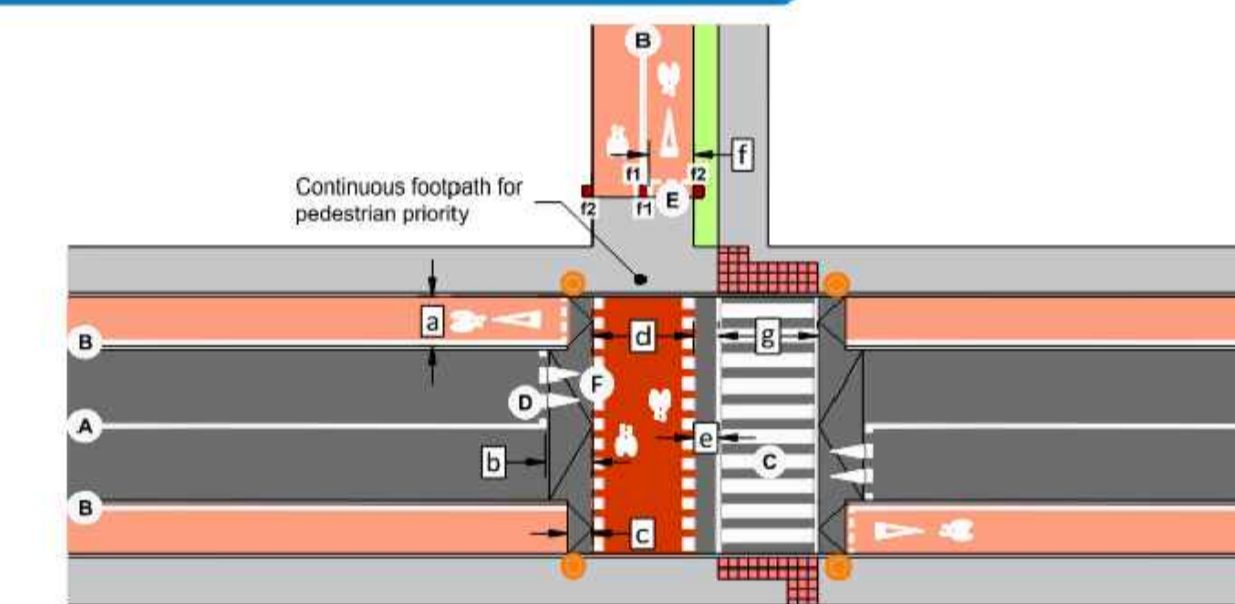


**Slow Zone Signage (F403)**  
Scale : NTS



**Typical Dished Kerb Detail**  
Scale : NTS

### TL604 Parallel Zebra Crossing



- NOTES:**
1. Suitable in speed limits up to 50 km/h, depending on traffic volumes (see Table 4.24).
  2. Provides segregated controlled crossing of carriageway for pedestrians and cyclists.
  3. Pedestrians cross on the zebra crossing (striped) and cyclists use the parallel space delineated by elephant's footprints. 1m gap typically provided between the two.
  4. Minimum width of zebra crossing is 2.4m.
  5. Minimum width of cycle crossing is 3m.
  6. Belisha beacons recommended both sides of the road on each approach as shown.
  7. Recommend that crossing is placed on a raised table.
  8. Where an adjoining cycle facility is present (as shown) use continuous footpath on main road and cyclists yield to pedestrians at the crossover.

**KEY DIMENSIONS**

- a 2m typically (refer to width calculator)
- b 1m - 2m
- c Distance determined by 5% max. gradient of ramp
- d 3m - 4m
- e 1m
- f Minimum 1.5m spacing between bollards. Preferably, edge bollards are just off paved area
- g 2.4m minimum

**KEY FEATURES**

- f1 Optional bollard with sign RUS 001 on side f1
- f2a Optional bollard with sign RUS 009 on side f2
- Bollards may be considered where access control is required
- Belisha beacon
- Red blister tactile
- f1 (RUS 001)
- f2 (RUS 009)

**ROAD MARKINGS (Refer to TSM Chapter 7)**

- RRM 001
- RRM 022
- RPC 001
- RRM 018
- RRM 018C
- Elephant Feet Markings (400mm wide, 400mm gap, 400mm mark)
- M 115C
- M 119
- M 116
- M 112

**Typical Detail TL604 - Parallel Crossing**  
Scale : NTS

REV.	DRAWN	CHKD	APPRVD	DATE	DETAILS
A	K.M.	S.O'G.	S.O'G.	27.09.24	Issued for LRD Application

CLIENT	Reside (Castlepark) Ltd.
PROJECT	Castlepark, Mallow, Co. Cork

DRAWING TITLE	Proposed Traffic Calming Details								
SHEET	A1	SCALE	1/500	PROJECT NO.	6621	DRAWING NO.	2016	STATUS/ISSUE	A